

TOYOTA 1UZ – 3UZ  
MANUAL QUIDE FOR  
JAGUAR XF X250 2.2 8HP70

2. 1UZ / 3UZ main flywhell instalation.

**DONT USE UZ SHIM SPACER FROM AUTOMATIC TRANMISSION  
MAIN FLYWHELL ASSEMBLED DIRECTLY**

**Torque for bolts from kit M10x1.25x40 12.9 class**

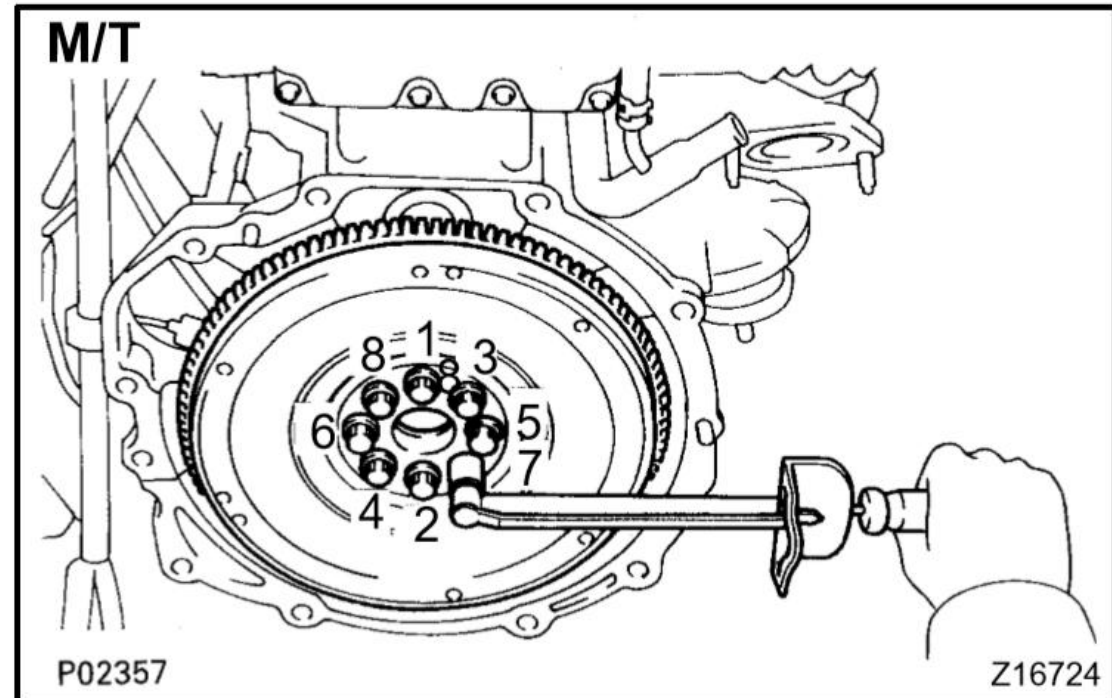
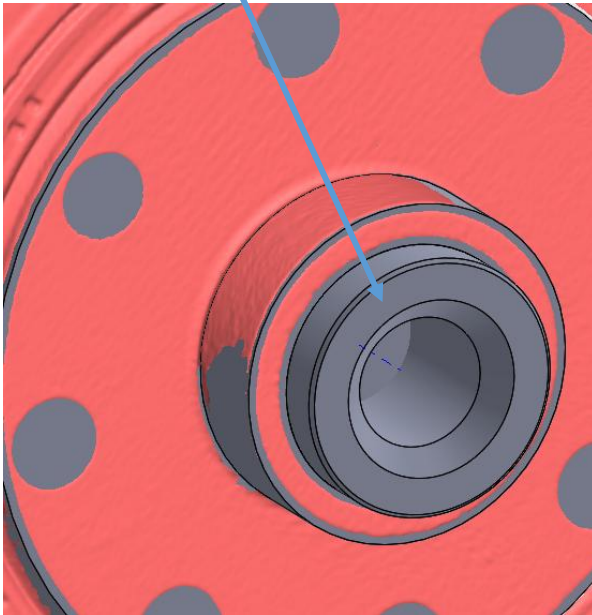
-use lubricant SOFT thread locker

-first stage 49Nm

-Secound stage 65Nm

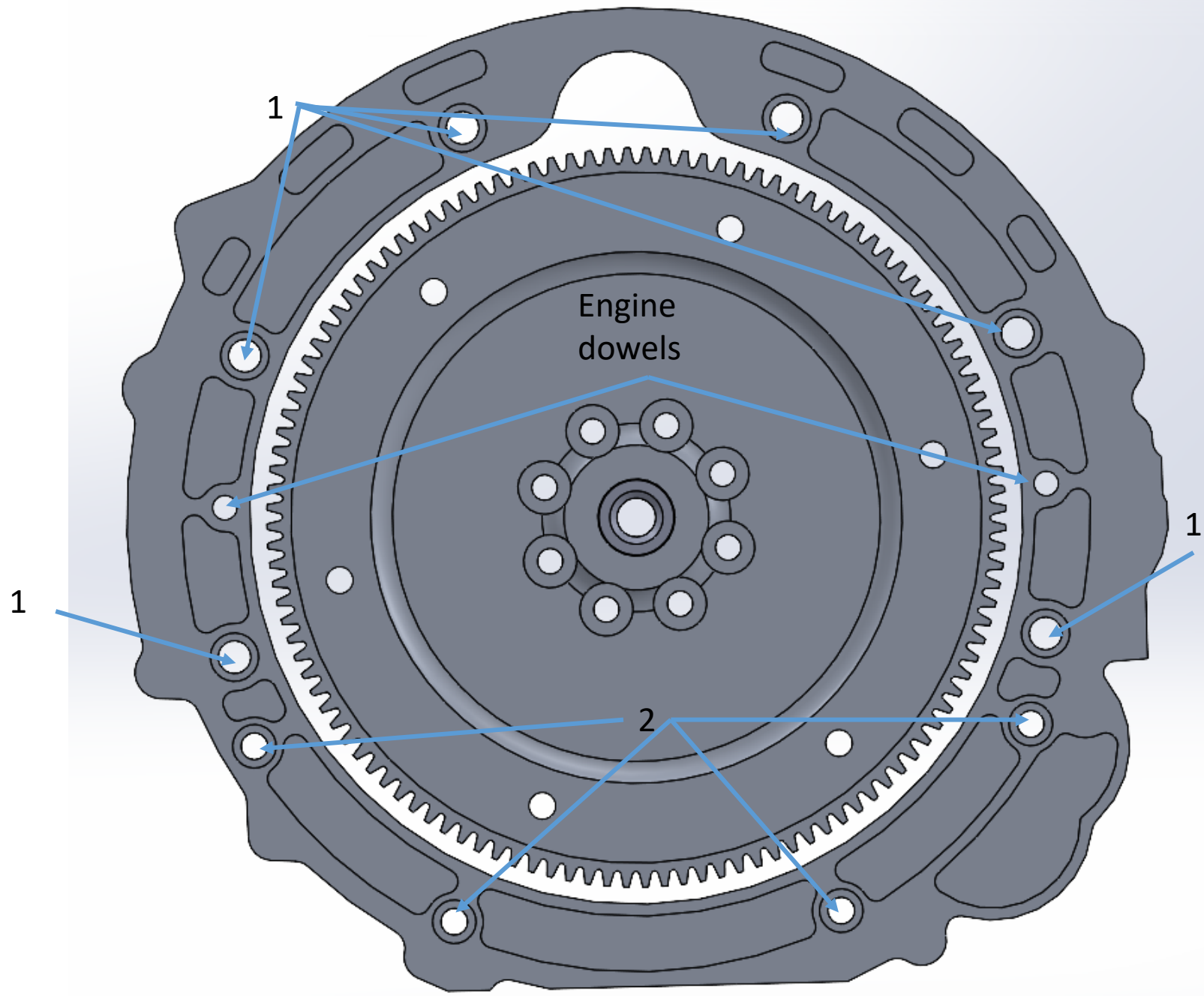
-final stage 92Nm

1. Install TC center pin in  
crankshaft



### 3. Adapter plate bolts chart.

No	Bolts type	Size	Qty
1	DIN912	M12x1.25x35	6
2	DIN912	Depends from engine version M10x35 M10x1,25x35	4



#### 4. Transmission case bolts chart.

No	Bolts type	Size	Qty
Other	DIN912	M10x40	10
B	DIN912	M8x40	2
C	DIN912	M10x40 + dowel pins in adapter installed	2



A

5. torque converter connected with flywheel.

**1** Torque for bolts DIN912 from kit 6x M10x25 12.9class

- first stage 49Nm
- Secound stage 55Nm
- final stage 79Nm

